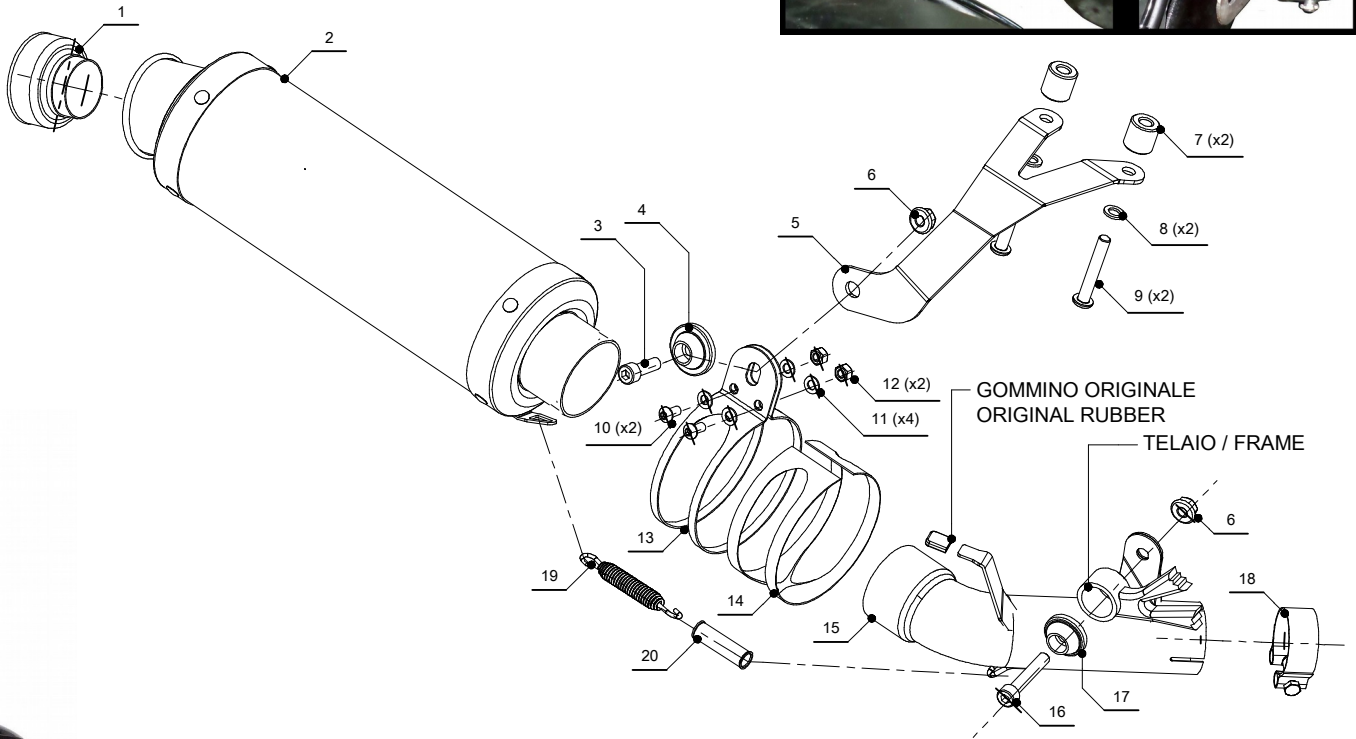
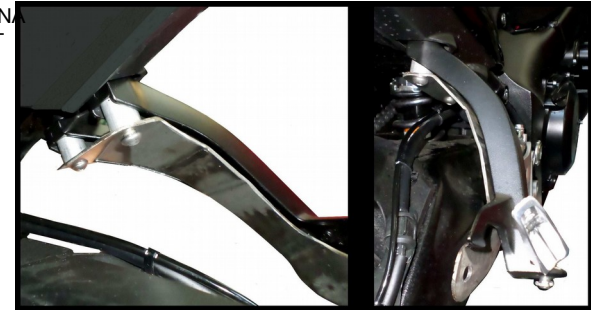


### ELENCO PARTI / PARTS LIST

| #  | QTÀ / QTY | DESCRIZIONE / DESCRIPTION                                       | CODICE / CODE |
|----|-----------|---|---------------|
| 1  | 1         | DB killer / DB killer   | 50.DK.067.0   |
| 2  | 1         | Silenziatore / Muffler  | GP            |
| 3  | 1         | Vite M8x25 / Screw M8x25  | 50.73.064.1   |
| 4  | 1         | Rondella in alluminio / Aluminium washer                        | 50.73.063.1   |
| 5  | 1         | Staffa / Braket   | 50.SS.914.0   |
| 6  | 2         | Dado M8 fiangiato / Flanged nut M8                              | 50.73.393.1   |
| 7  | 2         | Distanziale in alluminio / Aluminium spacer (Øe.20 Øi.8,5 h.20) | 50.SS.073.1   |
| 8  | 2         | Rondella M8 / Washer M8   | 50.73.270.1   |
| 9  | 2         | Vite M8 x 50 / Screw M8 x 50                                    | 50.73.088.1   |
| 10 | 2         | Vite M6 x 12 / Screw M6 x 12                                    | 50.72.024.1   |
| 11 | 4         | Rondella M6 / Washer M6   | 50.72.027.1   |
| 12 | 2         | Dado M6 / Nut M6  | 50.73.146.1   |
| 13 | 1         | Staffa / Bracket  | 50.SS.241.1   |
| 14 | 1         | Protezione in gomma per staffa / Rubber protection for bracket  | 50.73.077.1   |
| 15 | 1         | Tubo di raccordo / Link pipe                                    | 9773S044S2    |
| 16 | 1         | Vite M8x45 / Screw M8x45  | 50.73.602.1   |
| 17 | 1         | Rondella alluminio / Aluminium washer                           | 50.73.291.1   |
| 18 | 1         | Fascetta Ø 44/47 mm / Pipe clamp Ø 44/47 mm                     | 50.FA.006.1   |
| 19 | 1         | Molla media / Middle spring                                     | 50.73.359.1   |
| 20 | 1         | Tubo in gomma per molla / Rubber pipe for spring                | 50.73.049.0   |

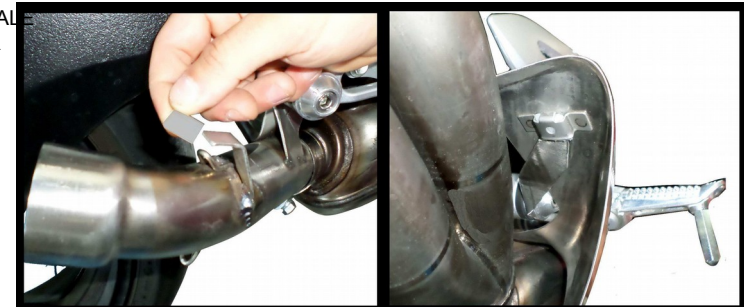


FISSAGGIO PEDANA  
FITTING REARSET



GOMMINO ORIGINALE  
ORIGINAL RUBBER  
TELAIO / FRAME

FISSAGGIO COVER ORIGINAL  
FITTING ORIGINALE COVER



### APPLICAZIONI / APPLICATIONS

| CODICE / CODE | TUBO / PIPE      | SILENZIATORE / MUFFLER | FASCETTA / CLAMP | CODICE OMOL. / HOMOL. CODE |
|---------------|------------------|------------------------|------------------|----------------------------|
| 74.S.044.LXS  | INOX / ST. STEEL | INOX / ST. STEEL       | INOX / ST. STEEL | ME074 E57 92R-01 0009      |



**CERTIFICATO DI OMOLOGAZIONE  
HOMOLOGATION CERTIFICATE  
ABE-BESCHEINIGUNG  
CERTIFICAT D'HOMOLOGATION**

| Tipo Silenziatore<br>Silencer Type<br>Auspuffsystem Typ<br>Type de silencieux | Nr. Omologazione<br>Homologation Nr.<br>EU. Genehmigungsnummer<br>Numéro d'homologation | Tipo veicolo<br>Vehicle Type<br>Fahrzeugstyp<br>Type de véhicule                                     | Modello Veicolo<br>Vehicle Model<br>Fahrzeugmodell<br>Model de véhicule |
|---|---|--|---|
| ME074   | E57 92R-01 0009   | DG, DG111, DG112<br>DG113, DG211, DG212<br>DG213, DG214<br><br>DG32,DG45,DG322,<br>DG452,DG324,DG454 | SUZUKI GSX S 1000   |

Il suddetto impianto di scarico, da noi prodotto, è conforme con la:

The above exhaust system is in compliance with the:

bestätigt, dass og von uns hergestelltes Auspuffsystem, der:

Le système d'échappement susnommé est en conformité avec la :

***ECE Regulation No. 92***

